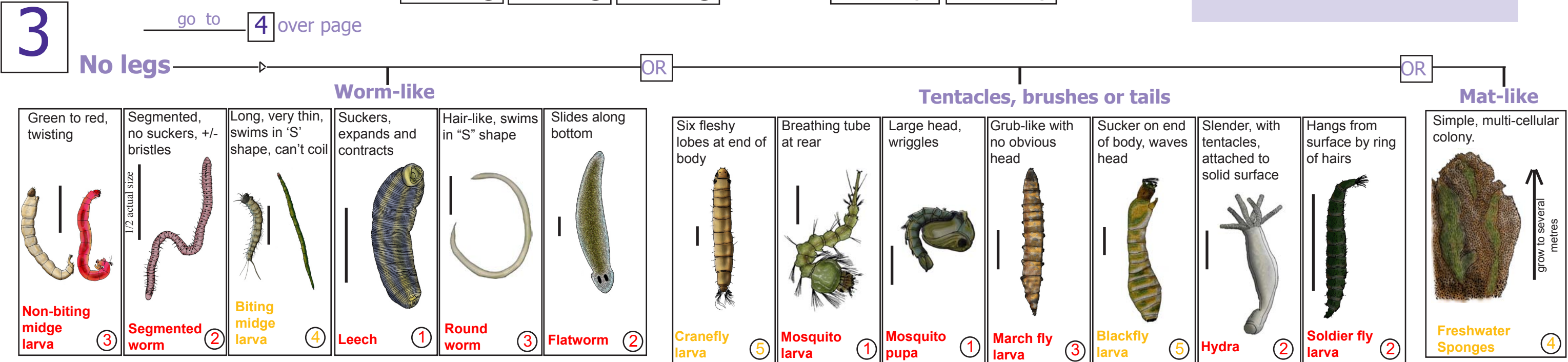
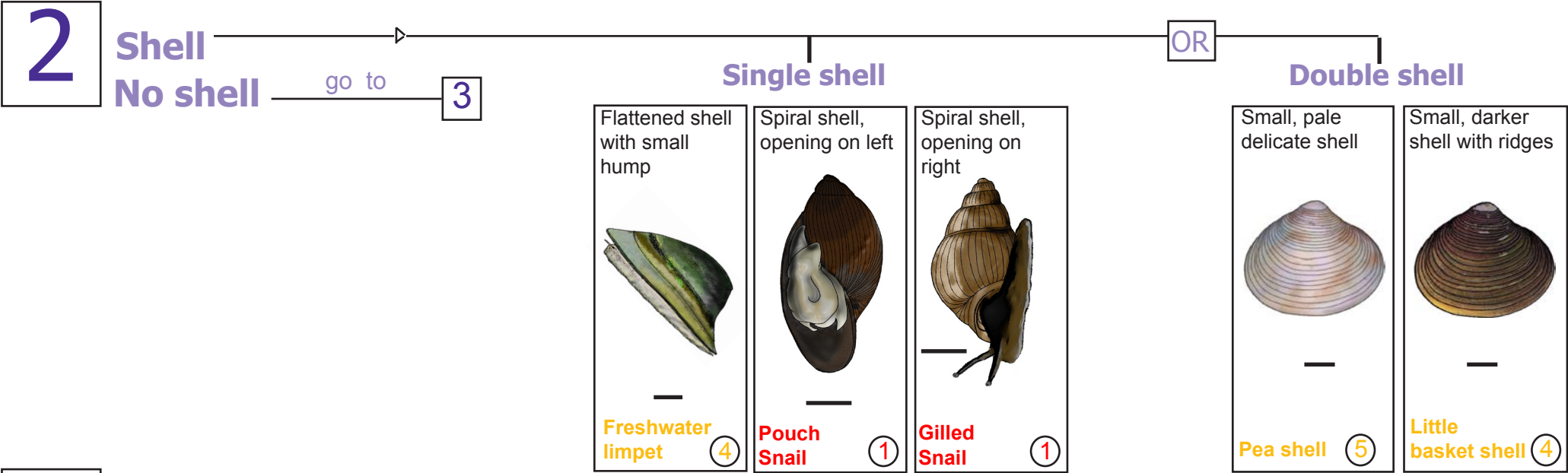
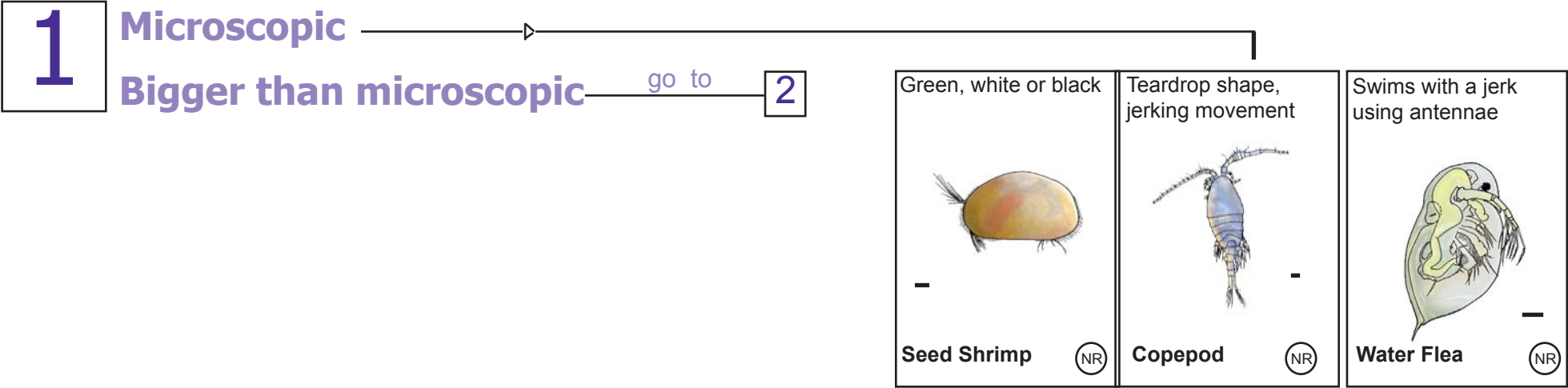


Aquatic Macroinvertebrate ID Key



Invertebrate Size (—)

Average actual size unless stated otherwise.

Pollution Sensitivity*:

- NR Not rated
- 10 — 8 Very sensitive
- 7 — 6 Sensitive
- 5 — 4 Tolerant
- 3 — 1 Very tolerant

Acknowledgements

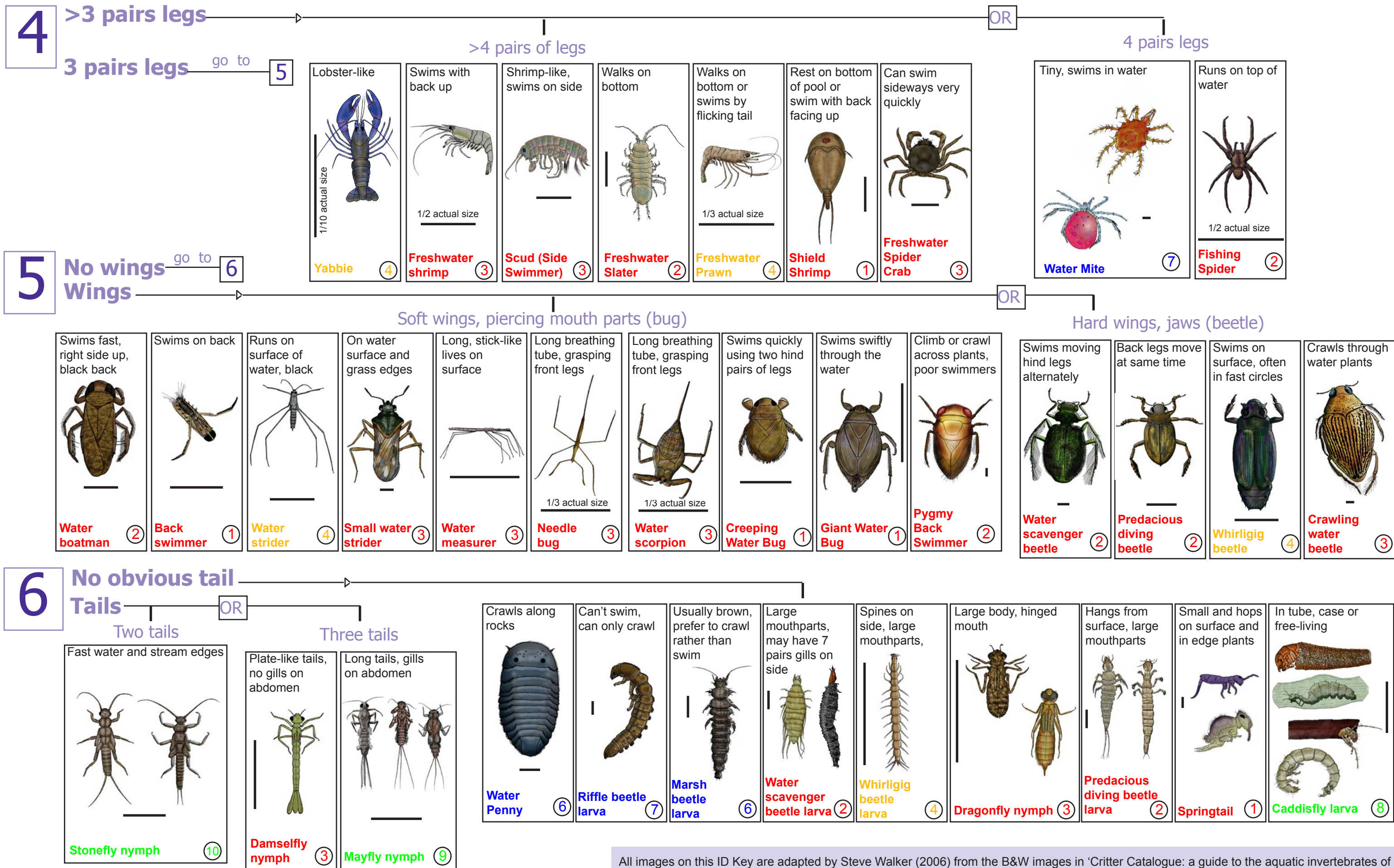
♦ This key was designed by Ron Simms and Amy Blaylock, 2002.

♦ Adapted by Steve Walker, 2011.

♦ Assistance was kindly provided by the following staff members of the South Australian Museum: Dr. Errol Matthews, Dr. Chris Watts and Mr Robert Hamilton-Bruce.

*Sensitivity ratings from SIGNAL2 system in "New sensitivity grades for Australian river macroinvertebrates. Bruce C. Chessman. Marine and Freshwater Research, 2003, 54, 95-103."





(c) NRM Education 2011

Acknowledgements

Source: Junior Aquatic Macroinvertebrate Colour ID Chart. Used with permission of NRM Education
© NRM Education, 2011.